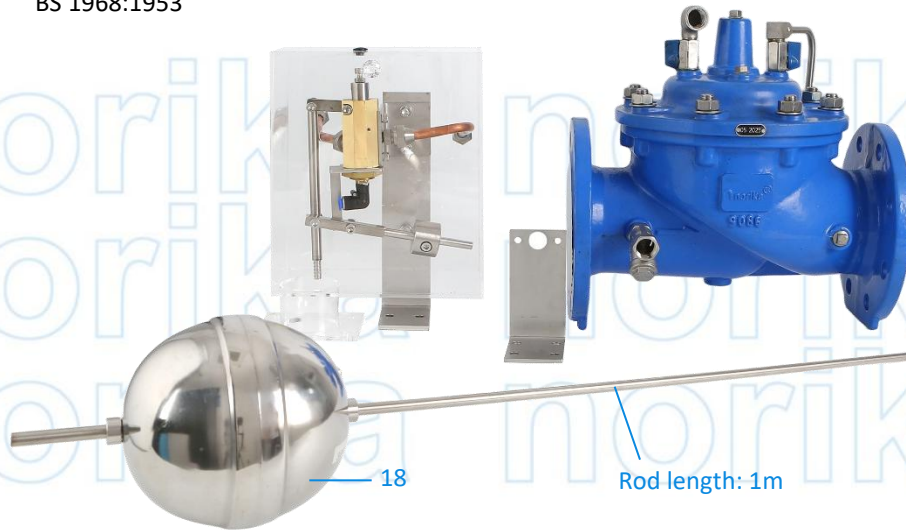


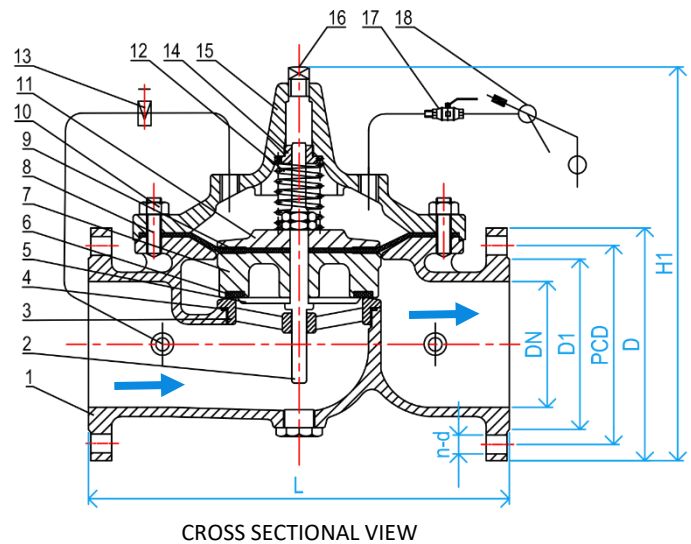
EPOXY-COATED DUCTILE IRON IN-LINE HYDRAULICALLY CONTROLLED PILOT OPERATED FLOAT VALVE



COMPLY WITH BS 1212-2:1990
BS EN 1092-2:1997
BS 1968:1953



MAIN VALVE COMPONENT PARTS		
ITEMS	PARTS	MATERIAL
1	Body	Epoxy-coated Ductile Iron
2	Stem	Stainless Steel
3	Valve Seat	AISI304
4	O-ring	EPDM
5	Down Press Plate	AISI304
6	Sealing	EPDM
7	Valve Clack	AISI304
8	Bolt and Nut	AISI304
9	Diaphragm	EPDM
10	Nut	AISI304
11	Upper Press Plate	AISI304
12	Spring	AISI304
13	Regulating Valve	AISI304
14	Bearing	Brass
15	Bonnet	Epoxy-coated Ductile Iron
16	Plug	AISI304
17	Valve	AISI304
18	Ball and Accessories	AISI304



STANDARD SPECIFICATIONS	
Nominal Pressure	16 Bar
Working Medium	Water
Working Temperature	$0 \leq t \leq 80^{\circ}\text{C}$

DIMENSIONS

SKU	DN (mm)	D1 (mm)	PCD (mm)	D (mm)	L (mm)	No. of Bolt And Aperture (mm)	WEIGHT (kg)	PCS/CTN
POVDIN100F-PL	100	155	180	220	350	8-19	36.3	1
POVDIN150F-PL	150	215	240	285	480	8-23	76.0	1

